

Features 1

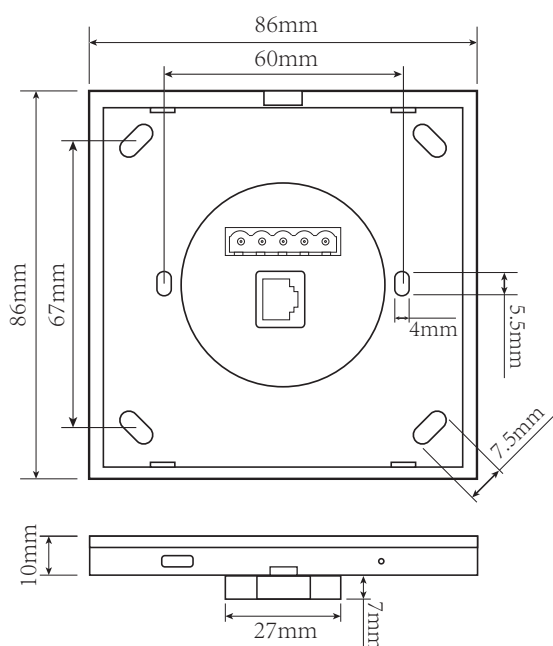
- Meet DMX512 (1990) international standard protocol
- Control 4 zones brightness separately or synchronously
- 4 customized scenes can be saved
- Each channel can achieve 256 levels brightness adjustment
- Memory function, remember the last brightness after turn off
- High sensitive & high stable Glass touch, fast & precise control
- Interface using tempered glass material, stylish appearance



Technical parameters 2

Voltage: 5V DC	Zones: 4	Dimming: DMX512
Power : 3.5W	Scenes: 4	N.G: 110g
Channels: 4	Product size: 86(L) *86 (W)*10 (H) mm	Work temperature: 0℃ - 50℃
Indicator lights: 9	Pack size: 145(L)*135(W)*48(H) mm	

Dimension 3



Appearance 4



Operation Guide 5

ON/OFF

Under OFF state, click on the “On/Off” button to open DMX panel, the lamps controlled by the panel will light up with the last closed state. Under ON state, click the “ON/OFF” button, you can close the panel, all lamps will turn off. ON/OFF led indicator will light weakly, indicate the ON/OFF button position in darkness.

Area/Zone Dimming

The panel supports four DMX zones, each zone has 1 channels. That zone 1 for channel 1, zone 2 for channel 2, zone 3 for channel 3, zone 4 for channel 4. Each zone has a corresponding indicator.

Click Zone1/2/3/4 button can be individually selected corresponding zone, the lamps connected of the zone will light up with the brightness saved last, and the corresponding indicator will light , and lamps of the zone can be dimming. You can adjust the brightness of lamps controlled in this zone by touch the ring, and other zones will not change at the same time.

Click another zone button to switch zone, the lighting effects/brightness of other zones will not change. Only the zone led indicator light up, indicated the zone could be dimmed.

When one zone is selected, click on the zone button again, the four zones will be selected simultaneously, and four regional indicators will light up together, in this case you can operate four zones synchronously.

Scene Settings

Click on Scene1/2/3/4 button, you can play 4 kinds of scene saved by user. Each time can only play one scene. In the scene play mode, you can't adjust the brightness of lamps.

After adjust the brightness of lamps on one or multiple zones, then long press the icon for 3 seconds, After "di - di - di" Tone, means the lighting effects of four zones have been saved in this scene successfully.

You can save up to four scenes user-defined. You can continue to save a new scene effect on the icon that has saved. (Note: The scene saved before will be covered).

Lighting Effect Editor

When you need to edit the lamps of brightness, you can use the powerful and live editing function of panel. Notice: You can edit lighting effects only after the corresponding zone have selected. Please refer to "Area/Zone Dimming" instruction to select the zone.

Brightness adjustment : Adjustable light brightness level, from the most dark location shown in the figure, along the ring clockwise touch the brightness adjustment ring, then the brightness of lamps will gradually increase; from the most bright location shown in the figure, along the ring anticlockwise touch the brightness adjust ring, then the brightness of lamps will gradually decrease.

Button Tone Setting

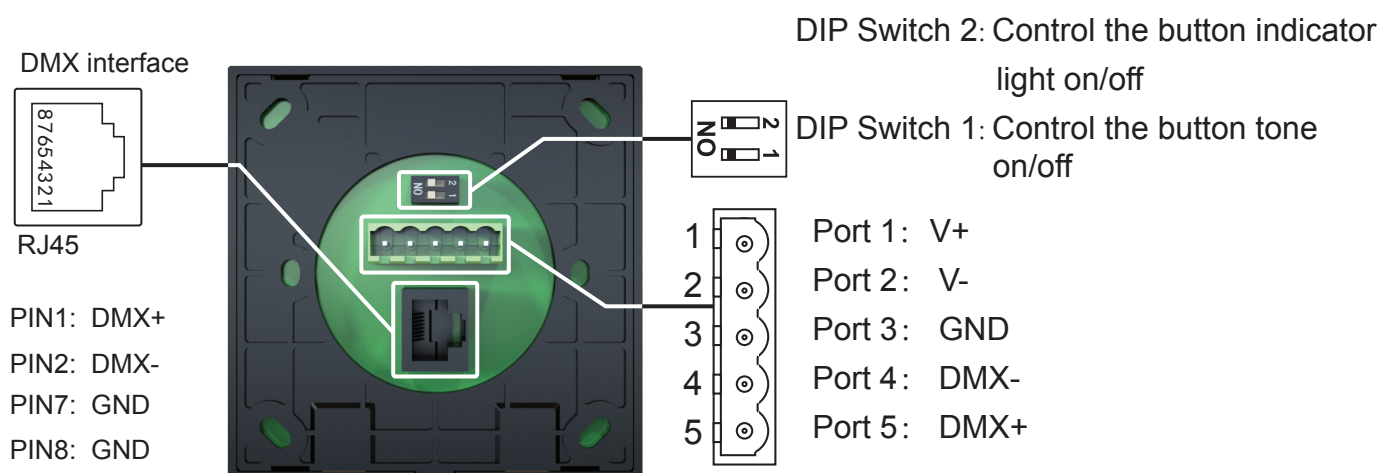
Use the DIP switch1 to set button tone. When set the DIP switch 1 to "ON" , the button tone is enabled; Otherwise, the button tone is disabled.

Button Indicator Setting

Use the DIP switch 2 to set the button indicator light. When set the DIP switch to "ON" , the button indicator will light up when touch the button; Otherwise, the button lights are disabled.

Interface Introduction

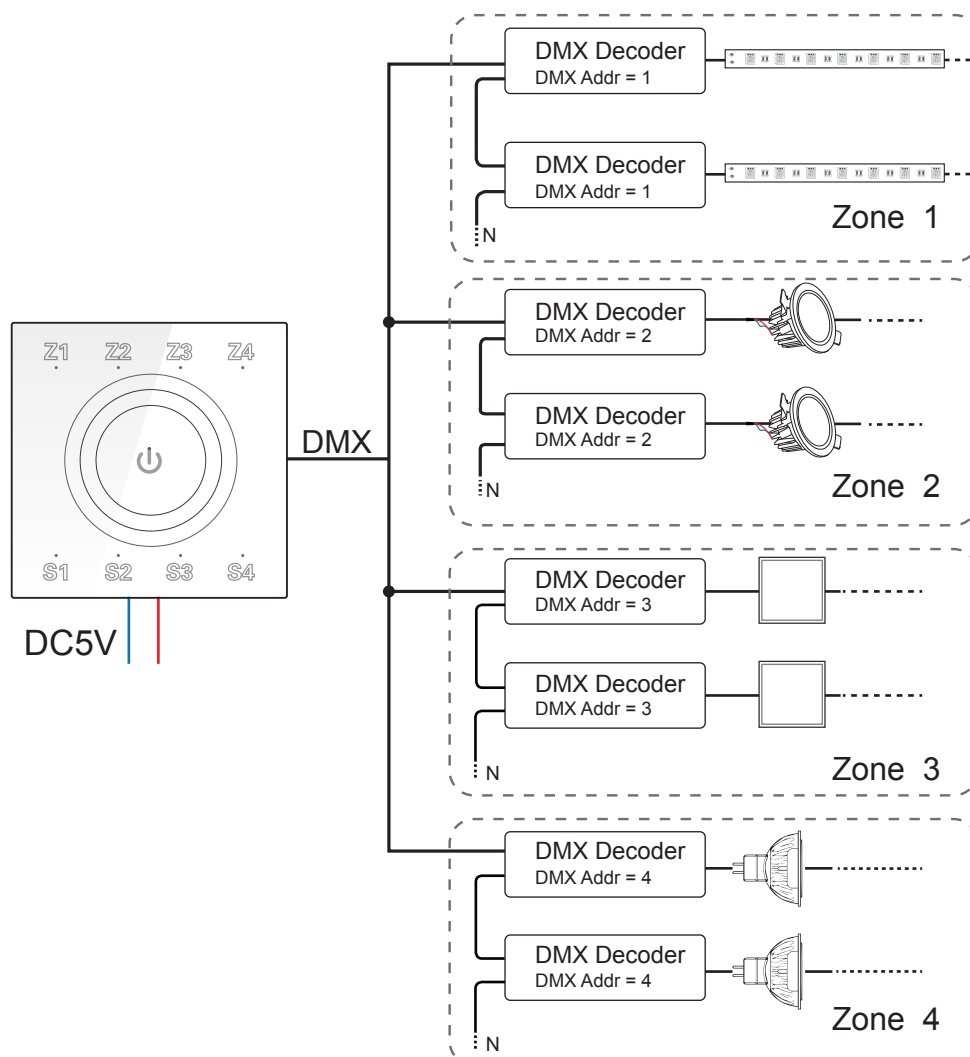
6



Notice: USB port and RST port is reserved, don't use in this product.

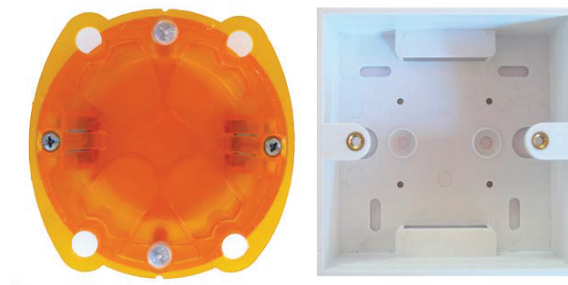
Application

7

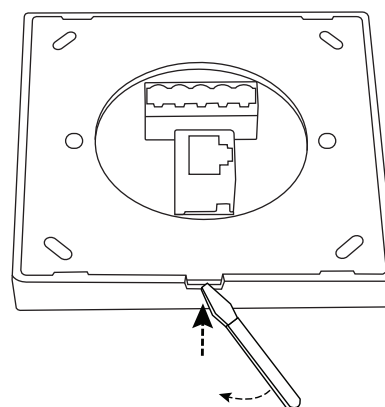


Installation guide 8

1. Mount an electrical box inside the wall



2. To separate the glass panel and the back cover of the controller with a screwdriver along the gap of the back cover.

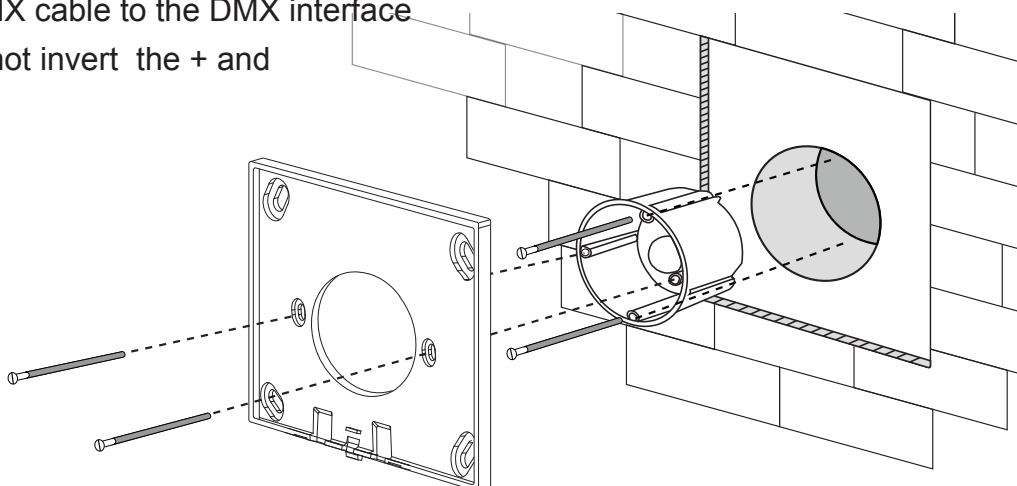


3. To put the back cover on the electrical box and fix it with the screw.

4. Connect the wires

DMX: Connect the DMX cable to the DMX interface

Power: Make sure to not invert the + and the ground



5. To buckle the glass panel to the back cover.

